

©1808

In da Losa

Losastrasse

Rheinstrasse

1636

1636

64

1527

63

1685

1685

63.1

n/a

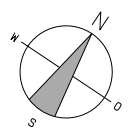
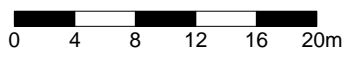
62

1619

1619-A

1619

Situationsplan



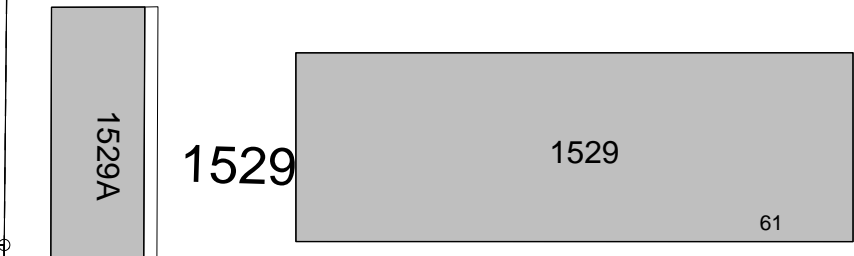
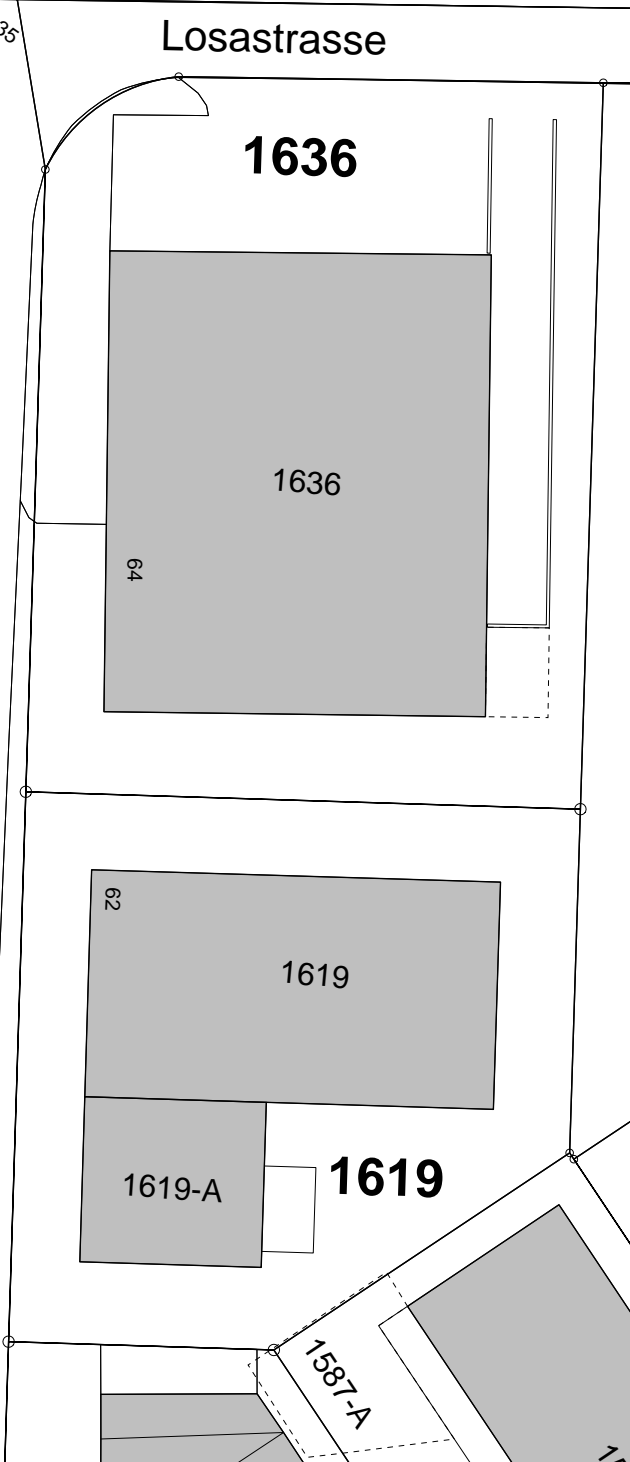
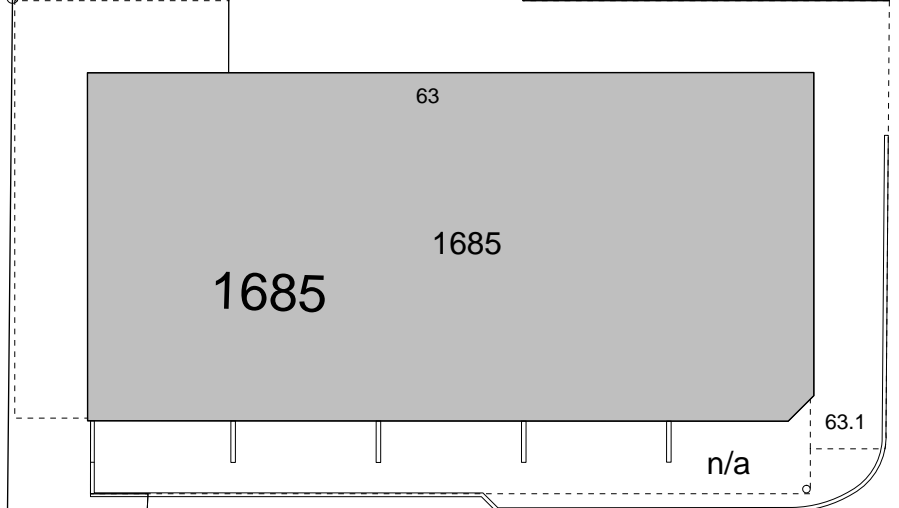
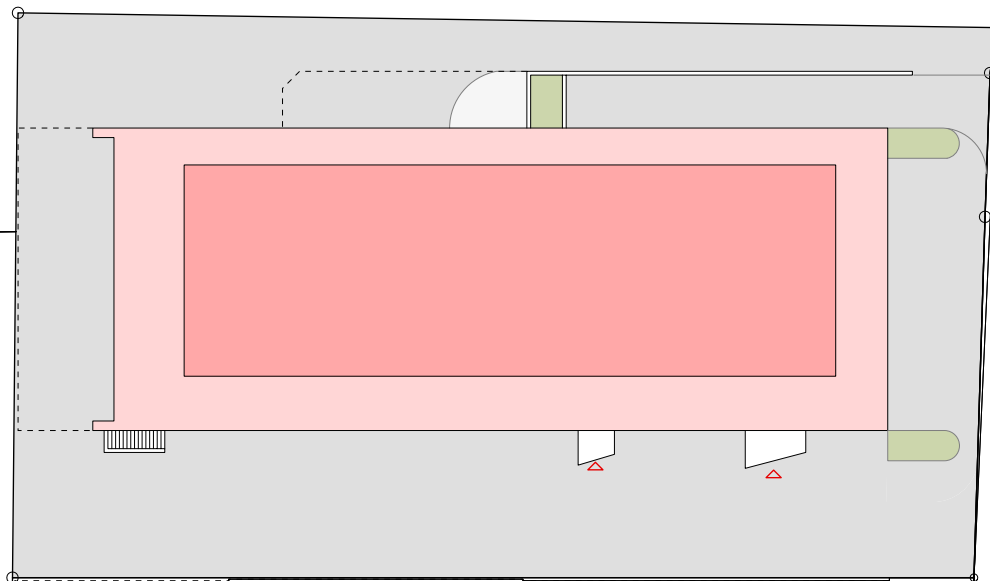
1529A

1529

1529

61

1587-A

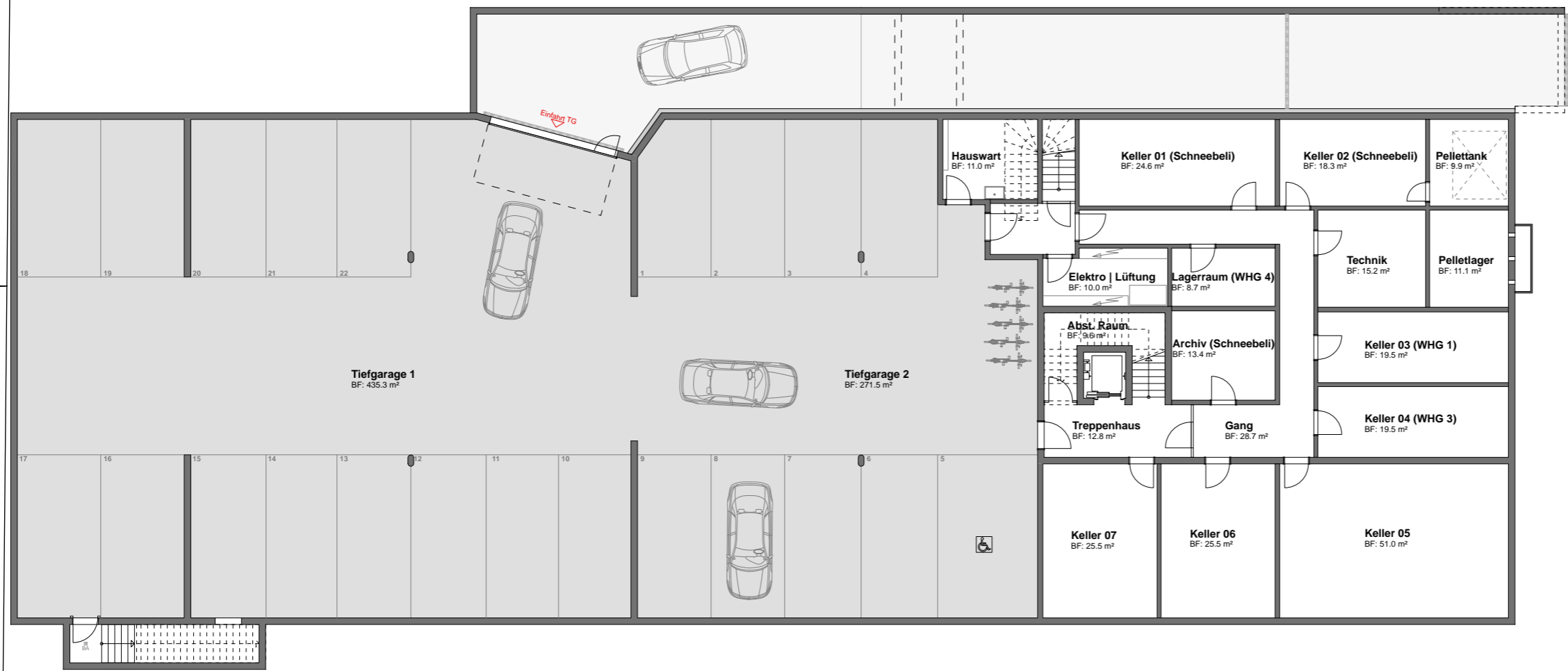


Fixpunkt Nr.2035
566.415 m.ü.M

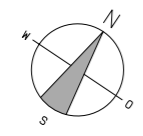
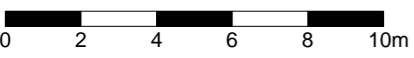
Losastrasse

Rheinstrasse

2



Untergeschoss



In da Losa

Fixpunkt Nr.2035
566.415 m.o.M | +0.11'

Losastrasse

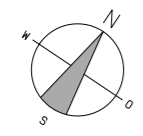
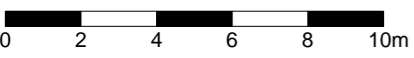
Rheinstrasse

2

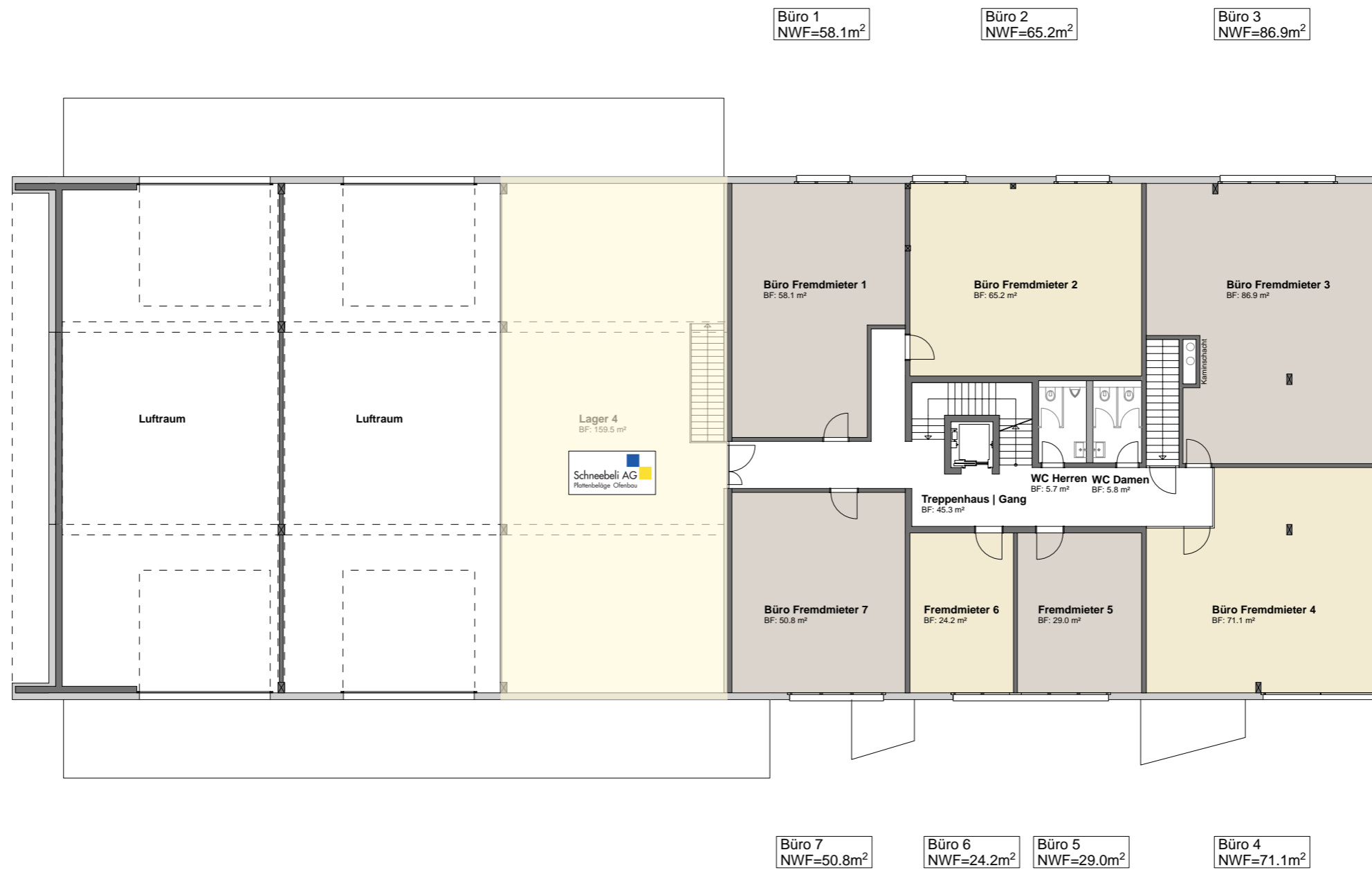
1527



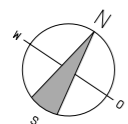
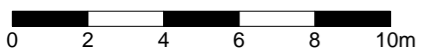
Erdgeschoss



63



Obergeschoss



Studio 1
NWF=19.9m²
Aussenfläche = 7.3m²

Wohnung 5
NWF=40.4m²
Aussenfläche = 14.5m²

Studio 2
NWF=20.8m²
Aussenfläche = 9.2m²

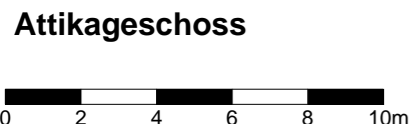
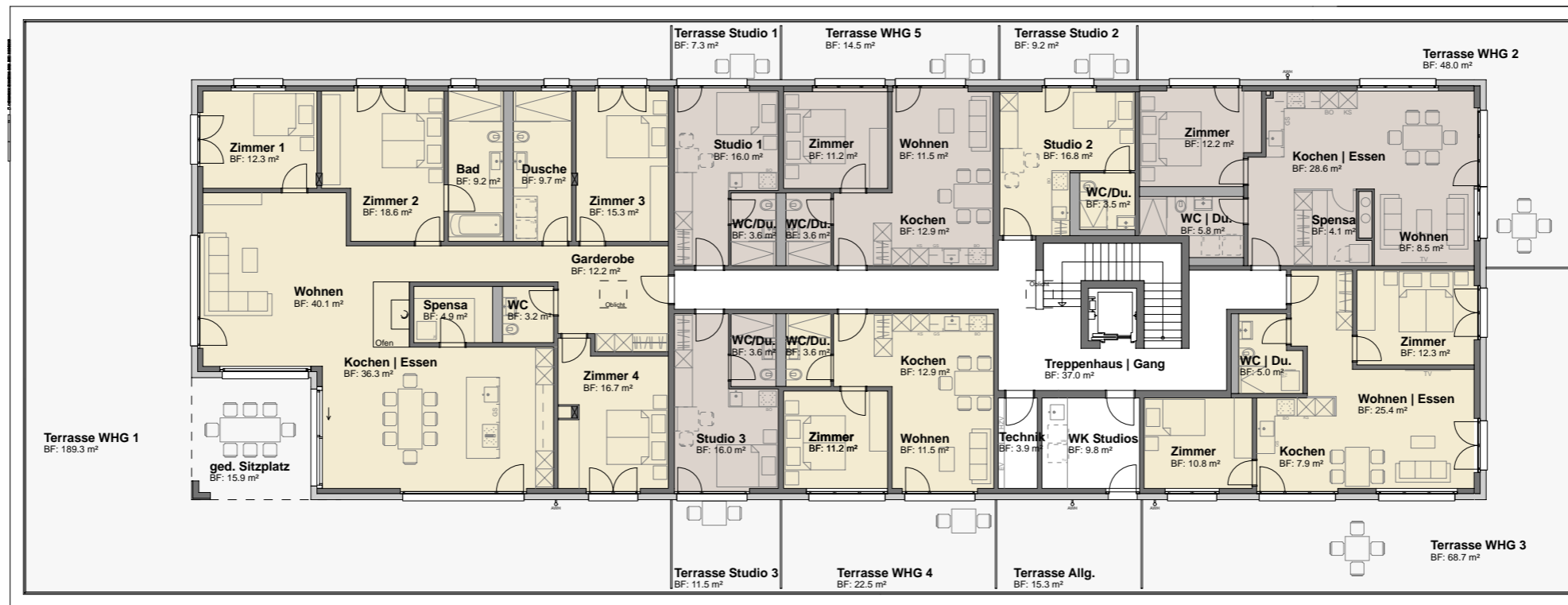
Wohnung 1
5.5-Zi. Whg
NWF=186.6m²
Aussenfläche = 205.3m²

Wohnung 2
2.5 Zi. Whg
NWF=61.5m²
Aussenfläche=48.0m²

Wohnung 3
2.5 Zi. Whg
NWF=63.8m²
Aussenfläche=68.7m²

Studio 3
NWF=19.9m²
Aussenfläche = 11.5m²

Wohnung 4
NWF=40.4m²
Aussenfläche = 22.5m²



Attikageschoss